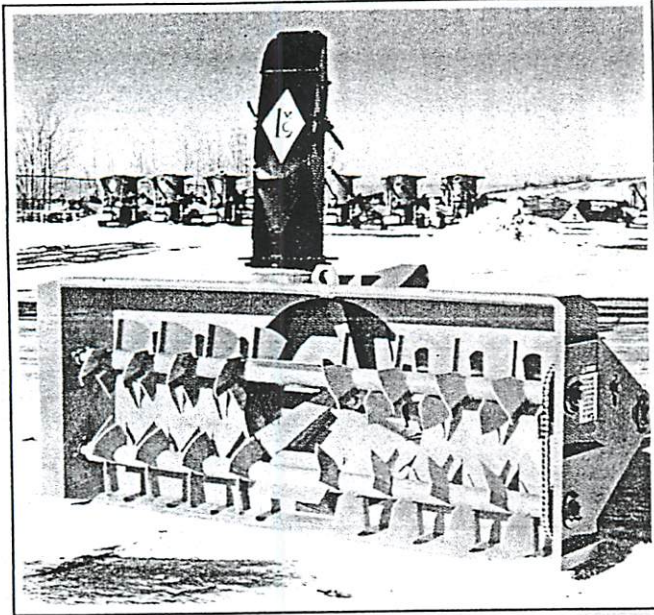


EXTERIOR  
hitch

530-300 - 315  
630-578 - 598



The Series 30 Blowers have most of the qualities of our larger blowers. They are scaled down for the smaller tractor. Paddle type augers help to break up ice and hard snow. The augers are driven by #50 roller chain. The augers and the fan are shear pin protected. Skid shoes are standard equipment. The Series 30 will operate on 15 to 35 HP tractors. The hitch is a three point Category I. A hydraulic spout control is optional.

530 306 → 315

630 578 → 598

# SERIES 30 SNOW BLOWER



**LORENZ**  
MANUFACTURING COMPANY  
Box 127 • BENSON, MN 56215  
612-843-3210

## SERIES 30 SPECIFICATIONS

### CUTTING WIDTH

Model 430.....	48"
Model 530.....	60"
Model 630.....	72"

HEIGHT OF HOUSING..... 30"

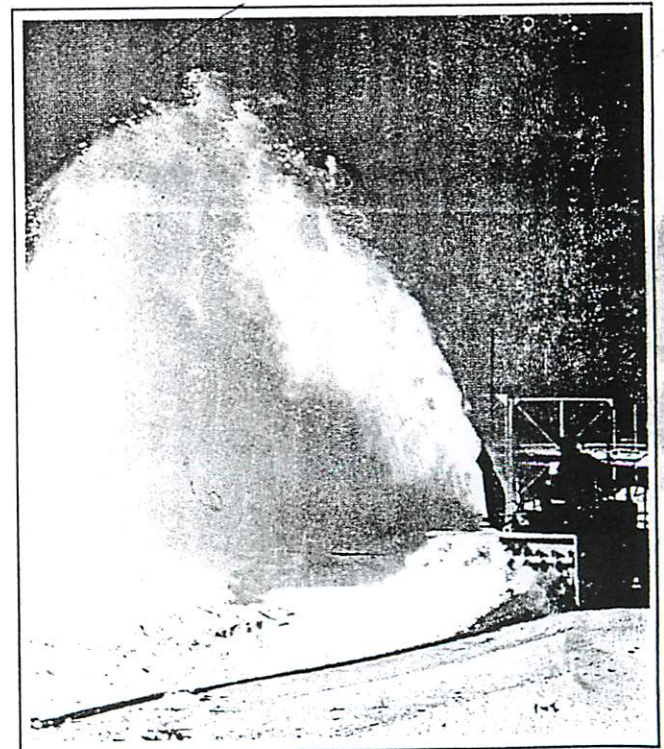
AUGERS..... Two 11"

FAN..... 26" Diameter  
8" Deep

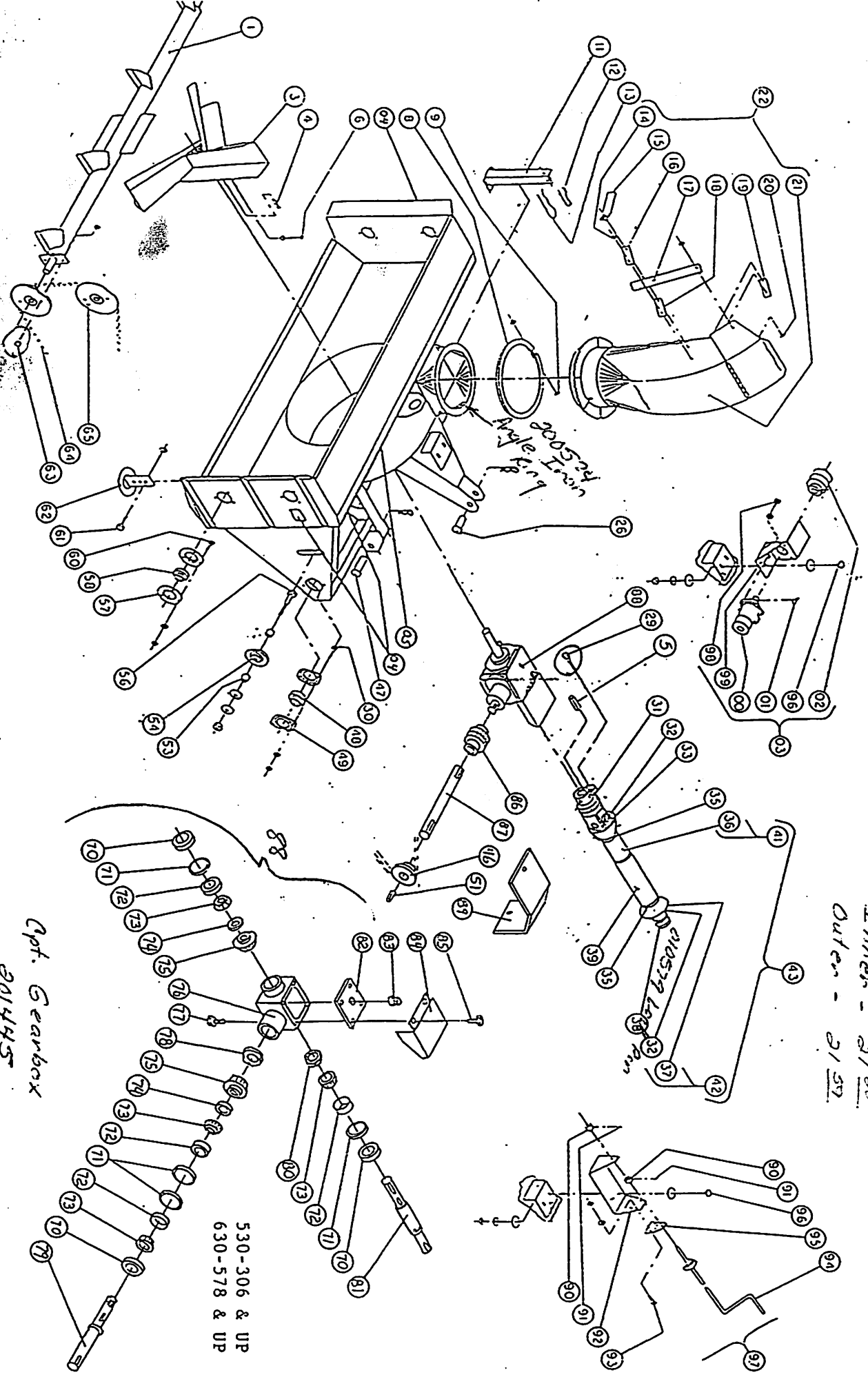
POWER..... 15 to 35 HP

### WEIGHT

Model 430.....	400 lb.
Model 530.....	425 lb.
Model 630.....	450 lb.



50 series Gtg Uni Shield  
 Inner - 2150  
 Outer - 2159



530-306 & UP  
 630-578 & UP

Apt. Gearbox  
 201445

Safety Guards and/or shields shown removed for illustration purposes only.  
 Do Not operate without guards and/or shields in place.

## PARTS LIST SERIES 30 SNOW BLOWERS

<u>ITEM NO</u>	<u>PART NO</u>	<u>DESCRIPTION</u>
1	201158	Auger Weld-430
	200705	Auger Weld-530
	200706	Auger Weld-630
3	201319	Fan
4	200971	1/4 x 1/4 x 2 Key
5	100659	1/4 x 1/4 x 1-1/2 Key
6		5/16 x 1 Sq. Head Set Screw
		5/16 Jam Nut
8	200975	Retainer Ring
9		1/4 x 2-1/2 HHCS Plated
		1/4 Lock Nut Plated
11	201322	Jackstand
12		#11 Hair Pin
13		#8 Hair Pin
14		3/8 Lock Nut Plated
15	200446	Tightener Arm
16	200954	Slide Tightener
17	201002	Adjustment Arm
18	200953	Slide Spacer
19	201006	Bolt Bracket
20		3/8 x 3/4 HHCS Plated
		3/8 Lock Nut Plated
21	201009	Spout and Deflector
22	<del>201010</del> 201009	Complete Spout Assembly
26	200692	Upper 3 Point Pin
		1/8 Hitch Pin
29		1/4 x 1-1/2 Grade 5 HHCS Plated
		1/4 Lock Nut Plated
30		3/8 x 1 HHCS
		3/8 Lock Washer
		3/8 Hex Nut
31	011165	Shear Yoke
	<del>011178</del>	Blower Shear Half
	<del>011179</del>	Tractor Shear Half
32	011158	Cross and Bearing Kit
33	011193	Yoke and Tube
35	010414	Bearing Ring-Shield
36	011162	Inner Tube Shield
37	011192	Yoke and Shaft
38	011156	Tractor Yoke 1-3/8 x 6 Spline
	011157	Quick Collar Kit
39	011163	Outer Tube Shield
41	011183	Implement Half PTO
42	011182	Tractor Half PTO
43	011154	Complete PTO
46	201161	50-18 x 1-1/4 Bore Sprocket
47	200701	Lower 3 Point Pin
		1/8 Hitch Pin
48	010417 55	1-1/4 Bearing
49	010592	Flangette
51	201436	1/4 x 1/4 x 1-1/4 Key
53	201106	1/2" Spacer
54	010195	#50 Idler Sprocket

56		5/8 x 3-1/2 HHCS
		5/8 Lock Nut
		5/8 Flat Washer
57	010019	Flangette
58	010021	1" Bearing
59		5/16 x 3/4 HHCS
		5/16 Hex Nut
		5/16 Lock Washer
61	010757	3/8 x 1-1/2 Clevis Pin Plated
	060385	1/8 Hair Pin
62	<del>200265</del> 201532	Skid Shoe
63		1/4 x 1 Grade 5 HHCS Plated
		1/4 Lock Nut Plated
64	010606	#50 x 109 Pitch Chain (Includes Connecting & Offset Link)
	010283	#50 Connecting Link
	010289	#50 offset Link
65	201160	50-32 Auger Drive Sprocket
70	010444	Seal
71	010438	Snap Ring
72	010436	Bearing Cup
73	010435	Bearing Cone
74	201435	Spacer
75	201382	Bevel Gear <i>14 or 19 tooth? If 19 tooth both</i>
	201438	Cross Shaft Key <i>gears must be replaced by</i>
	201437	Snout Shaft Key <i>14 tooth. and eliminate spacer.</i>
76	201424	Gearbox Housing
77		3/8 x 3/4 HHCS
		3/8 Lock Washer
78	010368	1-1/4 Stake Nut
79	201427	Snout Shaft
80	010902	1-3/8 Stake Nut
81	201425	Cross Shaft
82	201452	Cover
83	011108	Vented Plug
84	201446	Shield
85		5/16 x 3/4 HHCS
		5/16 x 1 HHCS
		5/16 Lock Washer
86	100286	Coupler Sprocket
	010286	Coupler Chain
87	201426	Drive Shaft-630
	201430	Drive Shaft-530
	201431	Drive Shaft-430
88	201445	Complete Gearbox
89	201434	Chain Coupler Shield
90	201148	Locking Collar
91		1/4 x 1/4 Allen Set Screw
92	201152	Main Mount
93		5/16 x 3/4 HHCS
		5/16 Hex Nut
		5/16 Lock Washer
94	201151	Spout Adjustment Arm
95	201150	Back Mount
96		3/8 x 1 HHCS
		3/8 Hex Nut
		3/8 Lock Washer
		3/8 Flat Washer

97	201153	Complete Manual Spout Adjustment Assembly
98		3/8 x 3/4 HHCS
		3/8 Lock Washer
99	201154	Hyd. Motor and Worm Gear Mount
100	010217	Hydraulic Motor
	010699	Seal Kit
101	200995	1/4 x 1 Notched Woodruff Key
102	201155	Right Hand Worm Gear
103	201156	Complete Hydraulic Assembly
104	011051	Danger Decal-Rotating Augers. Keep Away. Keep Others Away. Keep Off Snowblower. Failure to Heed Warning Could Result In Severe Injury or Death.
105	011052	Warning Decal-Shut Off Engine and Remove Key or Disconnect Power Take Off to Adjust, Grease, or Clean Out.
	011054	Danger Decal-Make Sure Power Take Off Shields Are in Place and Secure At All Times. Normal PTO Speed is 540 RPM.
	011063	Caution Decal-Do Not Operate Without Reading and Under- standing The Owners And Operators Manual. Call (612) 843-3210 To Get A Manual If Not Provided By Your Lorenz Dealer.